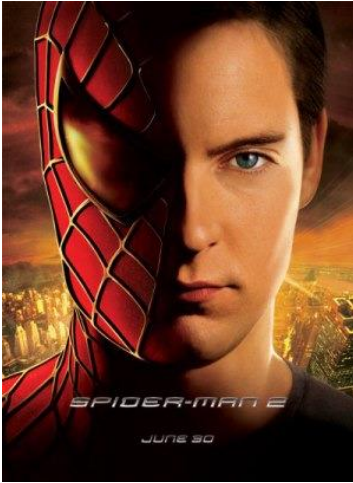


Digital Imaging Instructions "Paint.Net"

Please use this document as an example. You will have a template to download to your google drive, use that template to copy & paste your completed images. The Digital Imaging web site will be a great source of paint.net tutorials. You will be required to make 8 imaging enhancements, plus all original images.



Original



1.Black/White

1. Black / White

Use any color Image

1. Open paint.net with image
2. Adjustments
3. Select Black & White
4. **Save image as jpeg.**



Original



2.Car Color

2. Car Color

Your car choice needs to have limited background

1. Open image with paint.net
2. Adjustments
3. Hue / Saturation
4. Adjust as needed
5. **Save image as jpeg.**



Original

3. Eye Color

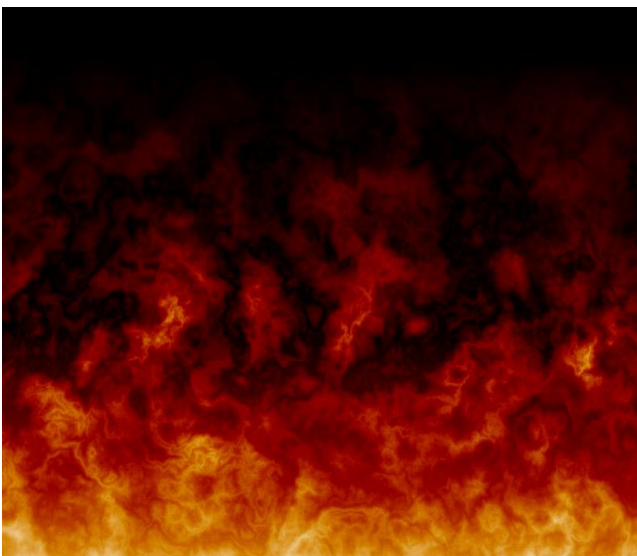
Human or Animal Eyes

1. Open image with paint.net
2. Select the lasso tool
3. Circle Eye
4. Add new Layer
5. Select eye color from the color palette, paint the eye.
6. Double click on layer 2, change to overlay, adjust opacity, and press OK.
7. Rectangle the eye
8. Effects > Blurs > Gaussian Blur, adjust as needed.
9. Adjustments > Hue/Saturation. Adjust as needed.
10. Eraser Tool > use as needed.
11. Repeat steps 2-10 for the other eye.
12. Merge all layers
13. **Save image as jpeg.**



3. Eye Color

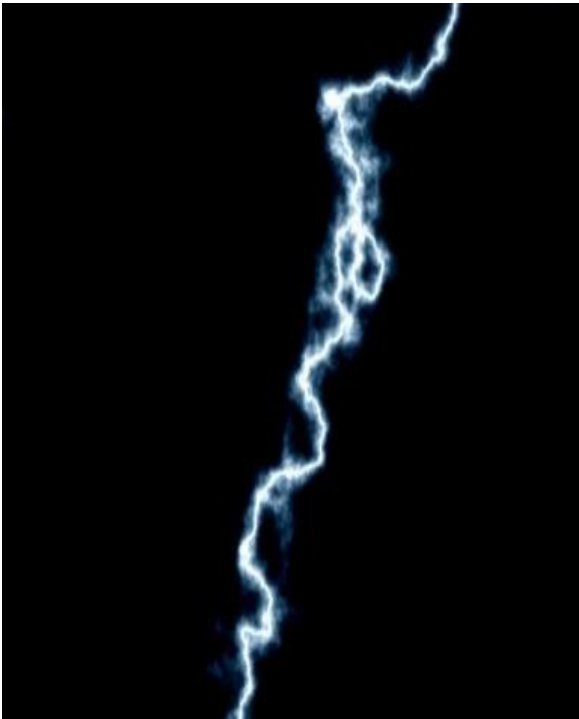
4. Fire



4. Fire

1. Gradient > Linear > Top to Bottom
2. New Layer > Properties, select overlay
3. Effects > Render > Clouds > Difference 250 / 0.50 press OK
4. Repeat 13 times, (Ctrl) F
5. Click on Merge layer down
6. Adjustments > curves > RGB, uncheck **red**, **green**, check > **blue**, make adjustments
7. Uncheck **blue**, check **green**, make adjustments.
8. **Save image as jpeg.**

5. Lighting



5. Lighting

1. Gradient > left to right about to the middle

2. Effects > Render > Clouds **250**

0.50 Select

Blend Mode: Difference

press OK

3. Adjustments > invert colors **press OK**

4. Adjustments > levels

Output

200

10

Press OK

5. Adjustments > Brightness / Contrast, adjust as needed

6. Adjustments > Sepia

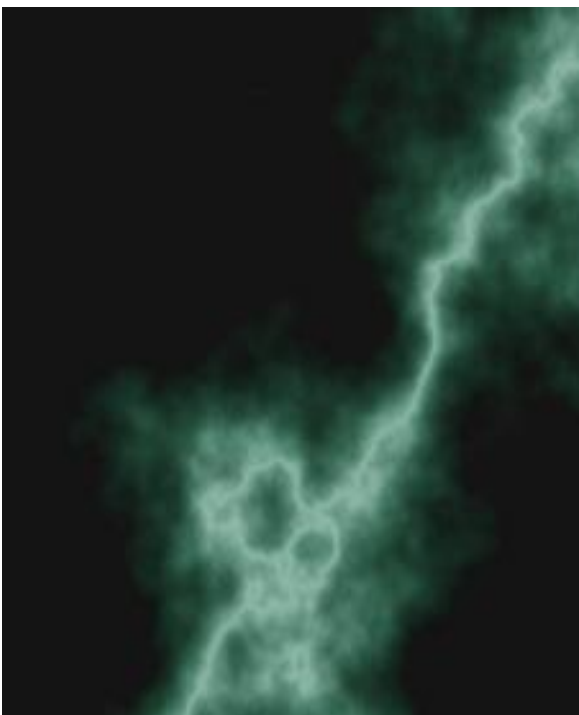
7. Adjustments > Hue / Saturation, adjust colors (178/125 blue lighting)

8. Image > Flip Horizontal (optional)

9. Paint Brush tool, paint excess clouds as needed

10. **Save image as jpeg.**

6. Lighting w/ Clouds



5. Lighting, with clouds

1. Gradient > left to right

2. Effects > Render > Clouds

500

0.50

Select Difference **press OK**

3. Adjustments > invert colors **Press OK**

4. Adjustments > levels

Output:

200

10

Press OK

5. Adjustments >> Brightness / Contrast B= -30 C= -17

6. Adjustments >> Sepia

7. Adjustments >> Hue / Saturation play with colors

8. Image > flip or rotate (optional)

8. **Save image as jpeg.**

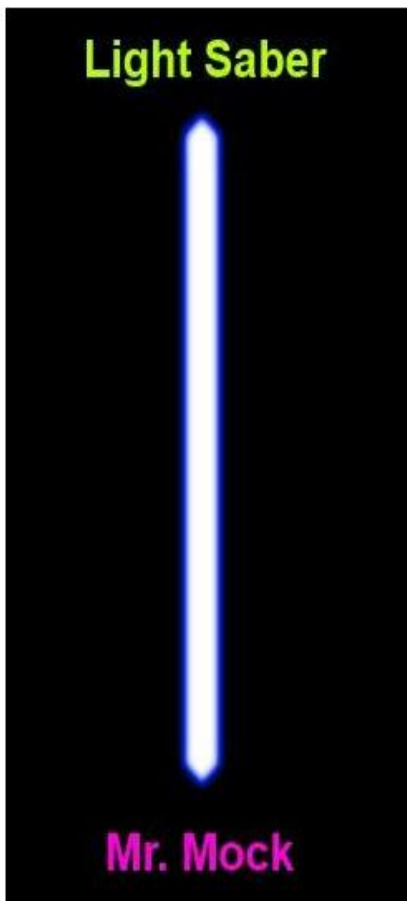
7. Background & Image and Text



7. Background & Image with Text

1. Open Background
2. Open image > Edit > Select all > Copy
3. Go back to background > Edit > Paste in to New Layer
4. Press Deselect
5. Choose text color
6. Choose Text Tool > Type, can adjust Font & Font size.
7. **Save image as jpeg.**

8. Light Saber



1. Open paint.net
2. Select black color, and the paint page black.
3. Change color to white
4. Use rounded rectangle tool, brush size 12 > draw a solid white vertical line.
5. Effects > Blurs > Gaussian Blur (radius 2) Press OK
6. Press Ctrl F three times
7. New layer > Select Blue Color > paint the page blue.
8. Layer 2 properties > select overlay > visible > opacity 255
9. Press Ctrl F four times
10. Effects > Blurs > Gaussian Blur (radius 4)
11. Press Ctrl F five times
12. Merge Layers
13. With Yellow Text > Title: Light Saber
14. New layer > Select Purple Color
15. With Purple Text > Your Name at the bottom of light saber
16. Merge all layers
17. Crop Image as shown on the picture > Save image as jpeg.